



2023-2024



# ONCAMPUS BOSTON



## Contents

### + Reaching a top U.S. university

Your route to a top U.S. university	04
How does ONCAMPUS Boston work?	05
Track record of success	06

### + Our Progression Partners

Elon University	08
Illinois Tech	09
University of Cincinnati	10
UMass Lowell & University At Albany	11
Florida Tech	12
California College of the Arts	13

### + About ONCAMPUS

International Year One	14
Transferring	16

### + Boston

Accommodation	18
Boston	20

### + Applying

Next steps	24
------------	----



# Your route to a top U.S. university

Our program allows you to take core classes in Critical Reading and Writing and general education subjects while also providing you with the flexibility to choose elective classes. Whether you already know your field of study or are still undecided, our experienced staff will help you with the course selection process to start you on the right path to your degree. Here are a few examples of possible course plans:

## If you are interested in...

(or if you are undecided on a major, your course plan may look like this...)



Business	Science & Engineering	Art & Design	Communication
<b>ACADEMIC COURSES</b> <ul style="list-style-type: none"> <li>Intro to Business</li> <li>Macroeconomics</li> <li>Communications</li> <li>Calculus</li> <li>Statistics</li> </ul>	<b>ACADEMIC COURSES</b> <ul style="list-style-type: none"> <li>Intro to Science</li> <li>Astronomy</li> <li>Physics</li> <li>Intro to Information Technology</li> <li>Computer Science</li> </ul>	<b>ACADEMIC COURSES</b> <ul style="list-style-type: none"> <li>History of Graphic Design</li> <li>Two dimensional Design</li> <li>Three dimensional Design</li> <li>Digital Essentials</li> </ul>	<b>ACADEMIC COURSES</b> <ul style="list-style-type: none"> <li>Public speaking</li> <li>Statistics</li> <li>Communication Technology</li> </ul>
<b>POSSIBLE DEGREE PROGRAMS</b> <ul style="list-style-type: none"> <li>Accounting &amp; Finance</li> <li>Business</li> <li>Economics</li> <li>International Relations</li> <li>Marketing</li> <li>Public Relations</li> </ul>	<b>POSSIBLE DEGREE PROGRAMS</b> <ul style="list-style-type: none"> <li>Biology</li> <li>Chemical Engineering</li> <li>Chemistry</li> <li>Civil Engineering</li> <li>Computer Science</li> <li>Health Professions</li> </ul>	<b>POSSIBLE DEGREE PROGRAMS</b> <ul style="list-style-type: none"> <li>Fine Art</li> <li>Art History</li> <li>Fashion</li> <li>Design</li> <li>Graphic art</li> <li>Studio art</li> </ul>	<b>POSSIBLE DEGREE PROGRAMS</b> <ul style="list-style-type: none"> <li>Communication</li> <li>Film</li> <li>Media Studies</li> </ul>

Each route requires you take both English/Writing and Math

Each route also has support courses:

University Success Class, TOEFL Preparation, English for Academic Purposes, General Academic Skills

# How does ONCAMPUS Boston Work?

## Apply



Join **ONCAMPUS Boston** on our **INTERNATIONAL FRESHMAN YEAR** program, especially designed for international students. Achievable requirements of 4.5 IELTS, or run on from TOEFL 50 and good high school grades.

## Transfer



We help you determine, and transfer to, the perfect school for you, whether that's Curry College or another U.S. University. We work with a number of excellent partner universities, but you are free to explore transferring to any of the more than 4,000 U.S. Universities and colleges, including our progression partners:

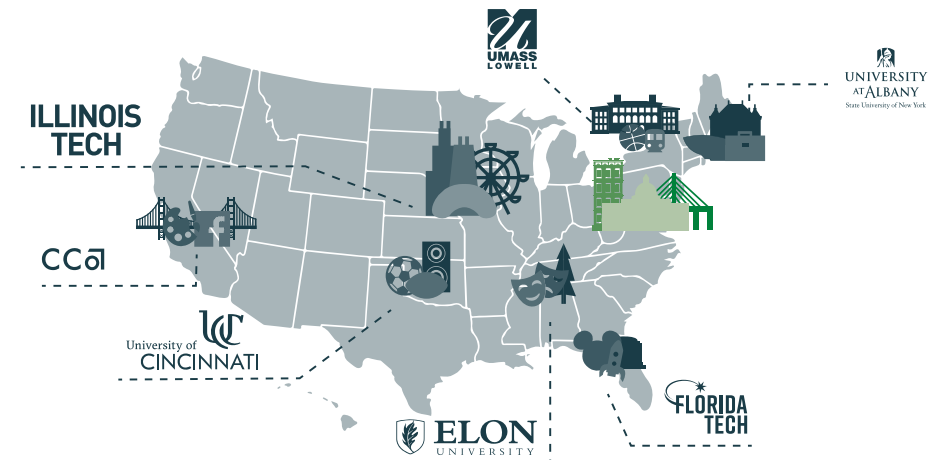
## Succeed



Continue your education at your best-fit U.S. University, where you will graduate with a degree from one of the most highly regarded education systems in the world. Graduating from a U.S. University gives you a competitive edge, with average graduate starting salaries of \$50,516 and opportunities to work for up to 12 months after graduation (with an additional 24 months for a STEM-designated subject).

## Progression partners

Start in Boston and succeed anywhere





# Track record of success

As well as our guaranteed transfer opportunities, our expert **ONCAMPUS** team will help you transfer to any University in the U.S. Below is where our students successfully progress to degree programs at top-ranked universities across the U.S.

**#17**



Cornell University

Hotel Management

**#20**



University of California, Berkeley

Marketing

**#25 TIED**



University of Southern California

Civil Engineering

**#25 TIED**



New York University

Applied Mathematics

**#44 TIED**



Brandeis University

Computer Science

**#41**



Boston University

Mathematics

**#44 TIED**



Northeastern University

Business

**#38**



University of Wisconsin

Computer Science

**#55**



Pepperdine University

Business



Track record of success

National Ranking - U.S. News & World Report 2022



# Our Progression Partners

## Guaranteed transfer opportunities

Start your U.S. study journey at the friendly and supportive Curry College, safe in the knowledge that you will have opportunities to transfer and progress to top-ranked universities in the U.S.

ONCAMPUS Boston gives you the opportunity to progress to a TOP 100 university in North Carolina.

**#89** NATIONAL UNIVERSITIES,  
U.S. NEWS & WORLD REPORT (2022)



**#3**  
FOR STUDY ABROAD  
PROGRAMS,  
U.S. NEWS & WORLD REPORT  
(2022)



**#1**  
FOR LEARNING  
COMMUNITIES  
U.S. NEWS & WORLD REPORT  
(2022)



**SCHOLARSHIPS**  
UP TO \$4,500  
RENEWABLE FOR UP TO 3 YEARS  
WITH 3.0 GPA  
AND 24 TRANSFERRABLE CREDIT HOURS

- #6** in Most Innovative Schools
- #9** in Co-ops/Internships
- #7** in Co-ops and Internships
- #24** in Analytics Programs
- #2** in First-Year Experiences

U.S. News & World Report 2021

# ILLINOIS TECH

ONCAMPUS Boston gives you the opportunity to progress to a TOP STEM university in Chicago.

**#80** NATIONAL UNIVERSITIES  
QS NATIONAL RANKING (2022)

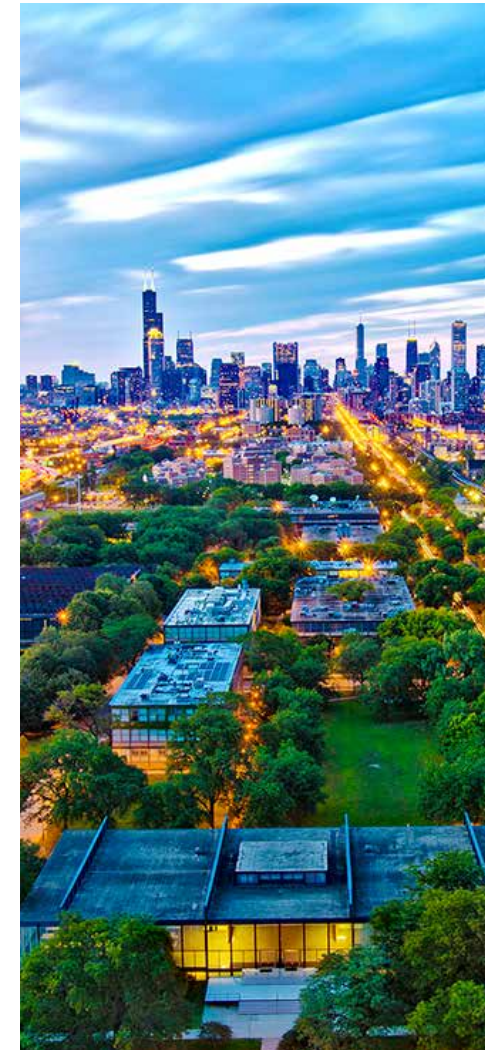
**SCHOLARSHIPS**  
UP TO \$22,000

PROGRESS TO THESE AVAILABLE  
MAJORS:

- B.ARCH. ARCHITECTURE
- B.S. COMMUNICATIONS
- B.S. SCIENCE, TECHNOLOGY & SOCIETY
- B.S. DIGITAL HUMANITIES
- B.S. SOCIAL & ECONOMIC DEVELOPMENT POLICY
- B.S. HUMANITIES
- B.A.C. INDUSTRIAL TECHNOLOGY & MANAGEMENT
- B.S. BEHAVIORAL HEALTH & WELLNESS
- B.A.C. INFORMATION TECHNOLOGY & MANAGEMENT
- B.S. GLOBAL STUDIES
- B.S. PSYCHOLOGICAL SCIENCE
- B.S. BUSINESS ADMINISTRATION

- #83** in Best Graduate Engineering Schools
- #44** in Best Value Schools
- #84** in Computer Science Programs
- #75** in Best Undergraduate Engineering Programs (tie)
- #94** in Computer Science (tie)

U.S. News & World Report 2021



**#16**  
FOR ARCHITECTURE  
PROGRAMS  
DESIGN INTELLIGENCE  
(2019-2020)



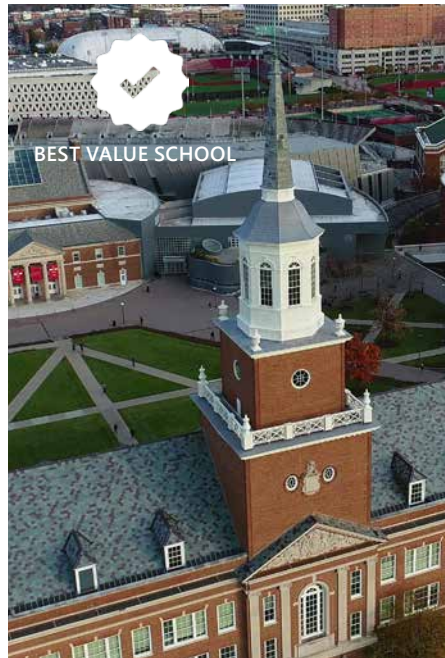
**TOP 3%**  
OF ALL U.S. COLLEGES  
U.S. NEWS & WORLD  
REPORT  
(2021)



ONCAMPUS Boston offers you the opportunity to progress to the TOP ranked University of Cincinnati in Ohio.

**#151** NATIONAL UNIVERSITIES (TIE)  
U.S. NEWS & WORLD REPORT (2022)

 **SCHOLARSHIPS**  
**UP TO \$15,000**  
RENEWABLE FOR UP TO 3 YEARS  
WITH 3.0 GPA



**#5**  
IN CO-OPS & INTERNSHIPS,  
DESIGN INTELLIGENCE (2021)



**#75**  
IN BEST UNDERGRADUATE  
ENGINEERING PROGRAMS (TIE)  
U.S. NEWS & WORLD REPORT (2021)



ONCAMPUS Boston gives you the opportunity to progress to a top university in the prestigious University of Massachusetts (UMass) system.

**#176** NATIONAL UNIVERSITIES (TIE)  
U.S. NEWS AND WORLD REPORT (2022)

 **SCHOLARSHIPS**  
**UP TO \$20,000 PER YEAR**

**#24** in Analytics Programs  
**#7** in Co-ops and Internships

U.S. NEWS & WORLD REPORT (2022)




UNIVERSITY  
AT ALBANY  
State University of New York

ONCAMPUS Boston offers you the opportunity to progress to a top university in the prestigious State University of New York (SUNY) system.

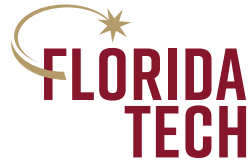
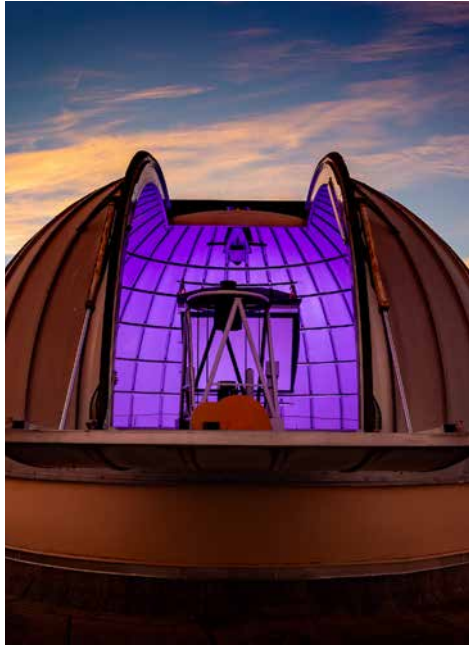
**#182** NATIONAL UNIVERSITIES (TIE)

 **TOP 4% OF U.S. UNIVERSITIES**  
**"ONE OF AMERICA'S TOP COLLEGES"**  
- FORBES

 **Median starting salary of alumni: \$52,900**







ONCAMPUS Boston gives you the opportunity to progress to Florida Institute of Technology, an established STEM university in Melbourne, Florida.

**#202** NATIONAL UNIVERSITIES

U.S. NEWS & WORLD REPORT (2022)



  
**SCHOLARSHIPS**  
UP TO \$15,000  
PER YEAR



**#95** in Best Value Schools  
**#150** in Best Undergraduate Engineering Programs (tie)  
U.S. NEWS & WORLD REPORT (2021)



Progress to California College of the Arts (CCA), one of the best Art and Design schools in the U.S. Located in San Francisco, CCA is top ranked for return on investment, lifestyle and careers.

**#29**  
ART AND DESIGN NATIONALLY  
QS WUR RANKINGS BY SUBJECT (2021)



**ARCHITECTURE**  
**DESIGN**  
**FINE ARTS**  
**HUMANITIES + SCIENCES**



**"#1 ART SCHOOL**  
**IN THE NATION**  
**FOR RETURN ON**  
**INVESTMENT"**

PAYSCALE (2021)

# International Year One (IY1)

ONCAMPUS Boston students earn the same number of college credits as any domestic first year student. It is a genuine first year university program with international student support. Upon completion of the ONCAMPUS Boston program students are on track to complete their undergraduate degree in only 3 additional years.

## Degree progression route

### Suggested Timetable



\* To choose 2-3

## Entry criteria

**English level:** IELTS 4.5  
TOEFL 50  
Duolingo 65

**Academic requirements:** Subject to completion of good high school grades

**Guideline minimum age:** 17+  
18 before the start of the term.  
17 with parental waiver form



Up to  
**22.5 hours**  
of classroom-based  
study time a week



**Practice**  
the full range of  
assessment methods you  
will use at university



Expert guidance and  
**Support**  
to progress to top  
U.S. universities



A personal  
**Tutor**

**Note:** The module choice here will depend on your chosen desired progression. For more information on module content, visit our website [www.oncampus.global](http://www.oncampus.global)

## New Spring Students Spring 2023\*

Tuition	\$42,440
Living Expenses (Room & Board)	\$17,840
Other costs	\$6,107
Comprehensive fee	\$2,090
Orientation	\$390

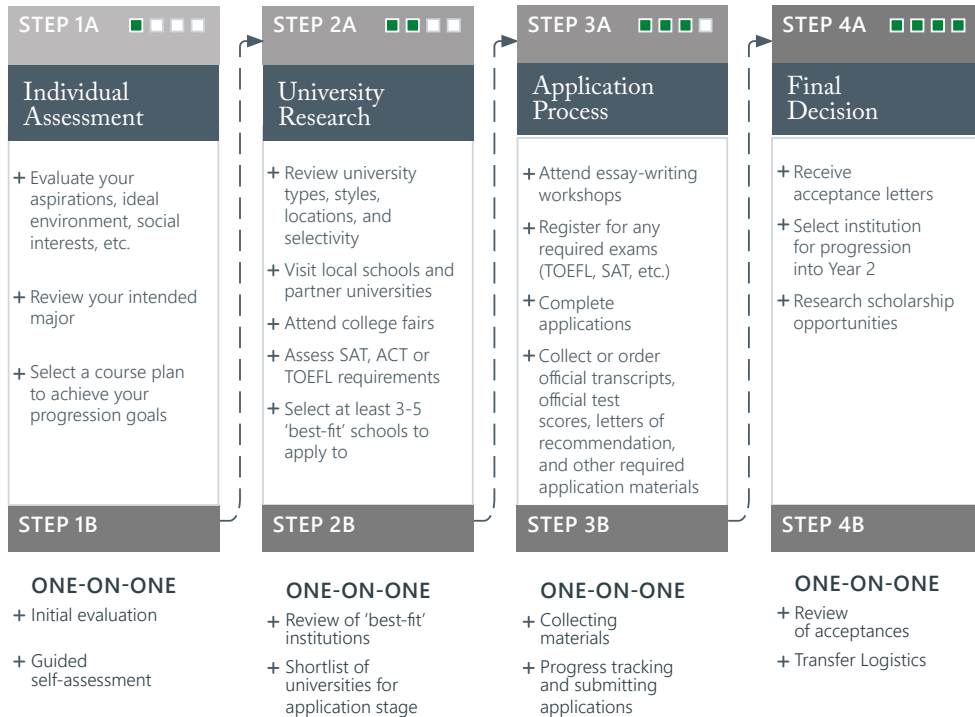
Rates for Spring 2023 – Fall 2023 program at ONCAMPUS Boston will increase between 1%-3% pending official publication of pricing by Curry College. Final invoice will be available through Curry College portal and please make your payment to Curry College.

	Spring 2023	Fall 2023	Spring 2024
Last 1-20	January 7	August 12	January 6
Move-in	January 21	August 25	January 21
Semester 1	January 24	August 29	January 23
Semester 2	August 29	January 23	August 29

**Scholarships are available, please contact us for more details.**



# ONCAMPUS Boston's University Transfer Advising 4-step process:



## Which university is the best for you?

**ONCAMPUS Boston** provides: A four-step university advising process

- + College visits
- + College fairs
- + Application support
- + Guidance on final decision



# Transfer Advising & Student Support



## ONCAMPUS Boston's University Success Seminar

supports you through every step of the university transfer process. **ONCAMPUS Boston** also specializes in giving you individual attention through academic and transfer advising.

## University Success Class (1 hour/wk)

You will explore how your interests relate to different majors and to possible careers. You will complete college research to discover best-fit universities. Then you will bring your self-assessment and research together by writing a college transfer essay with personal guidance from experienced writing instructors.

## Workshop (1.5 hours/wk)

This group seminar gives you an introduction to higher education in the U.S. It introduces students to a variety of student life issues and student services offered by Curry College. There is also time set aside for college visits, partner college fairs, and individual interviews with senior college admissions officers.



## EAP (English for Academic Purposes) & TOEFL/ DUOLINGO Support (EAP 2.5 hours/wk, TOEFL 75 mins/wk)

The English for Academic Purposes course is designed to bring English skills to a level that will help students be successful in college courses. TOEFL support class prepares students to take the TOEFL exam and helps to improve scores for students who have taken the test previously.

## Transfer Lab (1 hour/wk)

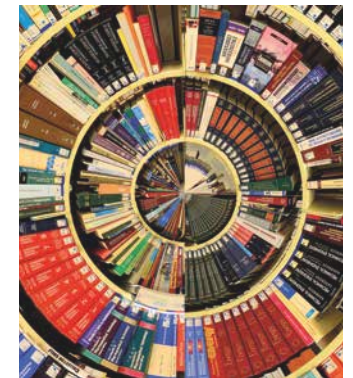
The **ONCAMPUS** staff lead you through the transfer application process step by step. You will get practical experience completing every component of the application together in a computer lab – including setting up the Common App, ordering official college transcripts, assigning faculty recommendations, and requesting a college official's report.

## Drop-in office hours

You are also free to stop by and talk with **ONCAMPUS Boston's** university adviser during weekly office hours.

## Academic Advising

You will attend one-on-one academic and transfer advising meetings during your two semesters in the program. **ONCAMPUS Boston's** holistic approach to advising gives you the support you need to succeed in classes, in extra-curricular activities, in the Curry community, and in understanding your options for your sophomore year and beyond.



# Your Home at Curry College

## Accommodation

Curry offers 19 amazing residence halls

North Campus Residence Hall (NCRH) where ONCAMPUS Boston students will be staying, is located on the north side of campus. The first floor offers a large laundry facility, a common room to hang out and watch TV, and three kitchen areas. The building is divided into eleven pods with a Resident Assistant located on every other pod.



NCRH offers quiet study lounges with collaborative learning technology, and a large common meeting space on each floor. The building also is equipped with central air conditioning. North Campus Residence Hall is home to 199 students including seven Resident Assistants.



## Dining

Curry believes that hard-working college students should be rewarded with a dining service that makes eating on campus pleasing, healthy, and social.



### Dining options

- STARBUCKS
- THE MARKETPLACE
- SMART MARKET
- KENNEDY CAFÉ



# Things to do in ... Boston

DIGITAL MAP



[goo.gl/maps/81WXaor5TSSsqTY9](https://goo.gl/maps/81WXaor5TSSsqTY9)



## Tasty Eats

- 1 Regina Pizzeria
- 2 Bon Me Food Trunk
- 3 Tasty Burger
- 4 Hong Kong Eatery
- 5 Dunkin Donuts



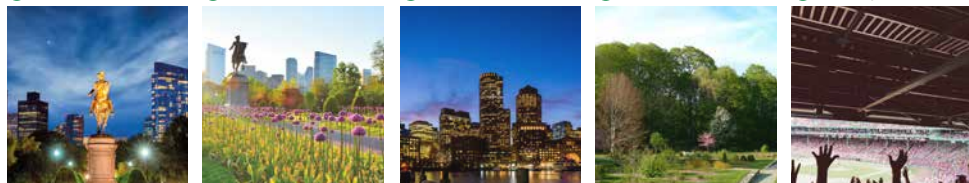
## Shopping

- 6 Cambridgeside
- 7 Copley Square
- 8 Newbury Street
- 9 South Shore Plaza
- 10 Legacy Place



## Instagramable Locations

- 11 Boston Common
- 12 Boston Public Garden
- 13 Boston Harbor
- 14 Arnold Arboretum
- 15 Fenway Park



**Massachusetts Institute of Technology**

**New England Aquarium**

**Massachusetts State House**

**Museum of Fine Arts**

**Boston Public Garden**

View our **ONCAMPUS BOSTON** video  
[youtu.be/IUTr42INhc](https://youtu.be/IUTr42INhc)



# Boston

Study in one of the world's learning capitals



Harvard University



MIT



Boston University



Tufts University



Brandeis University



Northeastern University

Ten colleges in Boston are in the U.S. top 100, including Boston College, Boston University, Tufts University and Northeastern University.

Boasts two of the world's top universities Harvard University and MIT.

50 colleges and universities in Boston attract more than 250,000 students, making the entire city feel like a college campus.

Emerging industries in Boston



Health Technology



Education Technology



Financial Technology

# Sports

are the life and soul of Boston!

## American Baseball

Fenway Park is home to the Red Sox, the city's American League baseball team

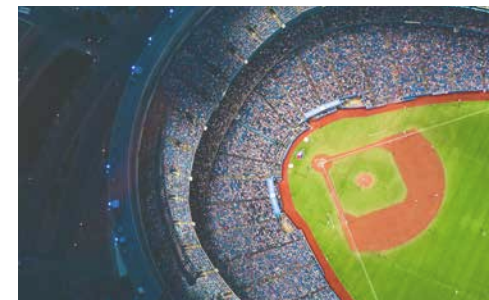


Red Sox

VS



Yankees



## Basketball

Boston Celtics biggest rivals Lakers



Celtics

VS



Lakers



## Football

The New England Patriots are the American football team based in Boston



New England Patriots

VS



Jets



## Ice Hockey

Boston Bruins biggest rivals Canadiens



Bruins

VS



Montreal Canadiens





# NEXT steps .....

## 1. Apply

Complete the ONCAMPUS Boston Application Form and send to our Admissions team, preferably along with electronic copies of:

- Academic Transcripts (along with certified translations if not in English)
- Copy of passport information page
- Evidence of English language level

## 2. Receive Offer

Within two working days, you will receive a response either with a conditional offer, a request for more information, or a notification that your application is under further review. Conditional offers will note any missing required documents.

- Send the completed Immigration Check Form and a copy of any previous or current visas and I-20 documents electronically to Admissions.\*
- Collect proof of funds as detailed in the Certification of Finance Form with any additional required forms and send electronically to Admissions.\*
- Fulfill any remaining conditions noted on your conditional offer letter.
- Pay the registration fee (\$300, non-refundable) and the deposit (\$2,200).

\*These forms are required, and an Acceptance Letter will not be issued unless they are completed.

## 3. Acceptance Letter and I-20

- Once you meet all the conditions of acceptance, a draft Acceptance Letter will be issued within two working days.
- Review the draft Acceptance Letter to make sure all information is correct and accurate, and confirm the shipping address and recipient to which the original of the I-20 document should be sent.
- Once any amendments have been sent to the CEG Admissions team or the Acceptance Letter is confirmed with them, the student will be emailed an electronic copy of the I-20 within one week, which will be followed by the original document in the mail.
- Please note that I-20s cannot be issued more than four months before the start of your course. If everything is ready before then, we will issue your I-20 as soon as the four-month deadline has passed.

## 4. F-1 Student Visa Application

- Once you have received an electronic copy of your I-20, book a visa appointment at your local U.S. Embassy and collect all the required documents.
- Follow the instructions from your local U.S. Embassy website to start your visa application.
- Students should ensure they are prepared to answer questions relating to their chosen study program in the USA, their own educational background, career intentions, and why they have chosen this course.

## 5. Arrival at ONCAMPUS Boston

- A pre-arrival handbook, which includes important information for your course of study, and medical forms, will be sent along with the electronic copy of the I-20, and will help prepare students for their arrival in Boston.
- Students must provide arrival details to Admissions and should arrive by the day before the program start date.
- The first few days of the program are dedicated to an orientation delivered by both the ONCAMPUS Boston and Curry College teams.
- F-1 students cannot enter the U.S. more than 30 days before the start of their program.

Should your application be successful and you are admitted to our program, your next step will be to apply for a student visa. As part of your visa application process, you will likely have to attend an in-person visa interview. Below are some tips on how to prepare for this.

**Do attend, Do answer, Do think, Do speak English, Be confident and Ask questions**

**Documents to bring** In general, students are asked to provide the following documentation:

- Original I-20
- Proof of payment of SEVIS fee
- Completed DS-160 form (Non-immigrant visa application)
- Acceptance Letter
- Proof of full payment of fees
- Passport
- Academic transcripts (with translations, if not in English)
- Financial evidence used for the I-20
- Passport-sized photograph

**QUESTION TYPE:** General information about you, your education, your choice to study in the U.S.

**Tip:** Show that you are a genuine student looking to further your education.

Make it clear that you plan to return to your home country – give reasons for returning to your home country that are stronger than those for remaining in the USA.

Please note: We cannot guarantee a successful outcome to your visa interview. These points are only meant to advise you on what you can expect during your visa interview.



CEG  
IMPACT

At Cambridge Education Group, we care about our planet and our people, and we strive to achieve more.

Follow our latest news

 @oncampusglobal

 @oncampus\_global

 @oncampus\_uusa

 @oncampus.global

 @studentsofoncampus

HEAD OFFICE

Cambridge Education Group

51-53 Hills Road, Cambridge,  
CB2 1NT, United Kingdom

Telephone: +44 (0)1223 345698

Email: [admissions@oncampus.global](mailto:admissions@oncampus.global)

Web: [www.oncampus.global](http://www.oncampus.global)

CENTRE ADDRESS

Curry College

1071 Blue Hill Ave, Milton

Boston

MA 02186



[www.carbonbalancedprinter.com](http://www.carbonbalancedprinter.com)  
Healeys Print Group - Reg. 2108

Information in this brochure is correct at time of issue in January 2023. ONCAMPUS and the University Partners reserve the right to alter, reschedule or close courses which do not remain viable; students will be informed. Please check our website at [www.oncampus.global](http://www.oncampus.global) for updated information.



**ONCAMPUS**  
**BOSTON**



Visit [www.oncampus.global/boston](http://www.oncampus.global/boston)

00966